

Biometric Circlelock



Security portal with biometric authentication

In response to market demands for increased security levels we developed the Circlelock with StereoVision to ensure single authorised person entry. Recent developments in biometric technology have produced a wide range of devices designed to authenticate individual users and now it is possible to incorporate this function within the Circlelock to ensure only the correct authorised user is permitted to pass.

Circlelock with StereoVision

Our Circlelock with StereoVision is a high security door, capable of ensuring only authorised users pass through an unmanned secure entry point. By combining interlocking door leaves with a sophisticated sensor system measuring shape, size and volume in 3-D, this compact high security portal blocks entry if more than one person attempts to gain entry on a single authorisation.

Why integrate biometric identification?

Combining biometric identity technology with a Circlelock StereoVision allows the system to positively authenticate a single user before they are allowed to complete their passage through the door. This prevents any possibility of an authorised user being forced into, or attempting to help an unauthorised person pass through the Circlelock.

Types of biometric technology

Our Circlelock offers the option to include special software to communicate with your biometric reader technology and a mounting column within the door to house any form of biometric device measuring up to 240mm x 120mm.

Typical biometric identification methods

- Fingerprint recognition
- Hand geometry recognition
- Palm vein recognition
- Iris recognition
- Voice recognition
- Face recognition

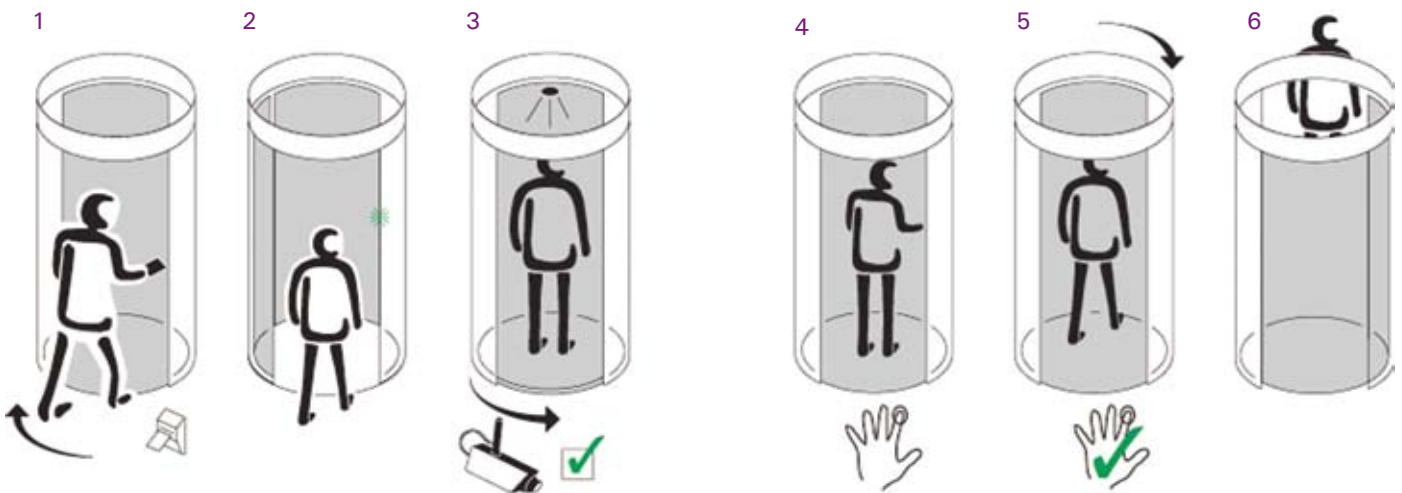
Advantages of biometrics

- Biometric identification as a means of security authorisation is completely individual and cannot be stolen, lost or forgotten.
- User characteristics relevant to the type of device being used are registered on a smartcard and these are used to positively authenticate the user.
- Biometric authentication guarantees security at unmanned entrances.

'Passage is only granted upon successful authorisation, verification and authentication'

Working Principle

- 1 Once a user is authorised by an external card reader the first door slides open and the user enters the Circlelock.
- 2 The authorised user enters the door and the first door wing re-closes.
- 3 The StereoVision system checks only one person is present.
- 4 The biometric device activates once the StereoVision system has verified only one user is present.
- 5 Passage is only granted upon successful authentication of the user.
- 6 The user passes through and the Circlelock is ready for further use.



More Information

Please see our website for more detailed information about the Circlelock and other products in our Security Access range.

SA-02-07-USA